

Pedestrian and cycle paths

More than 7 km of new pathways will be provided as part of the Queensland Government's Richlands to Springfield Project, connecting Springfield to the Brisbane cycle network. It will include a 4.2 km dedicated cycle path and 2.9 km of shared pedestrian and cycle paths.

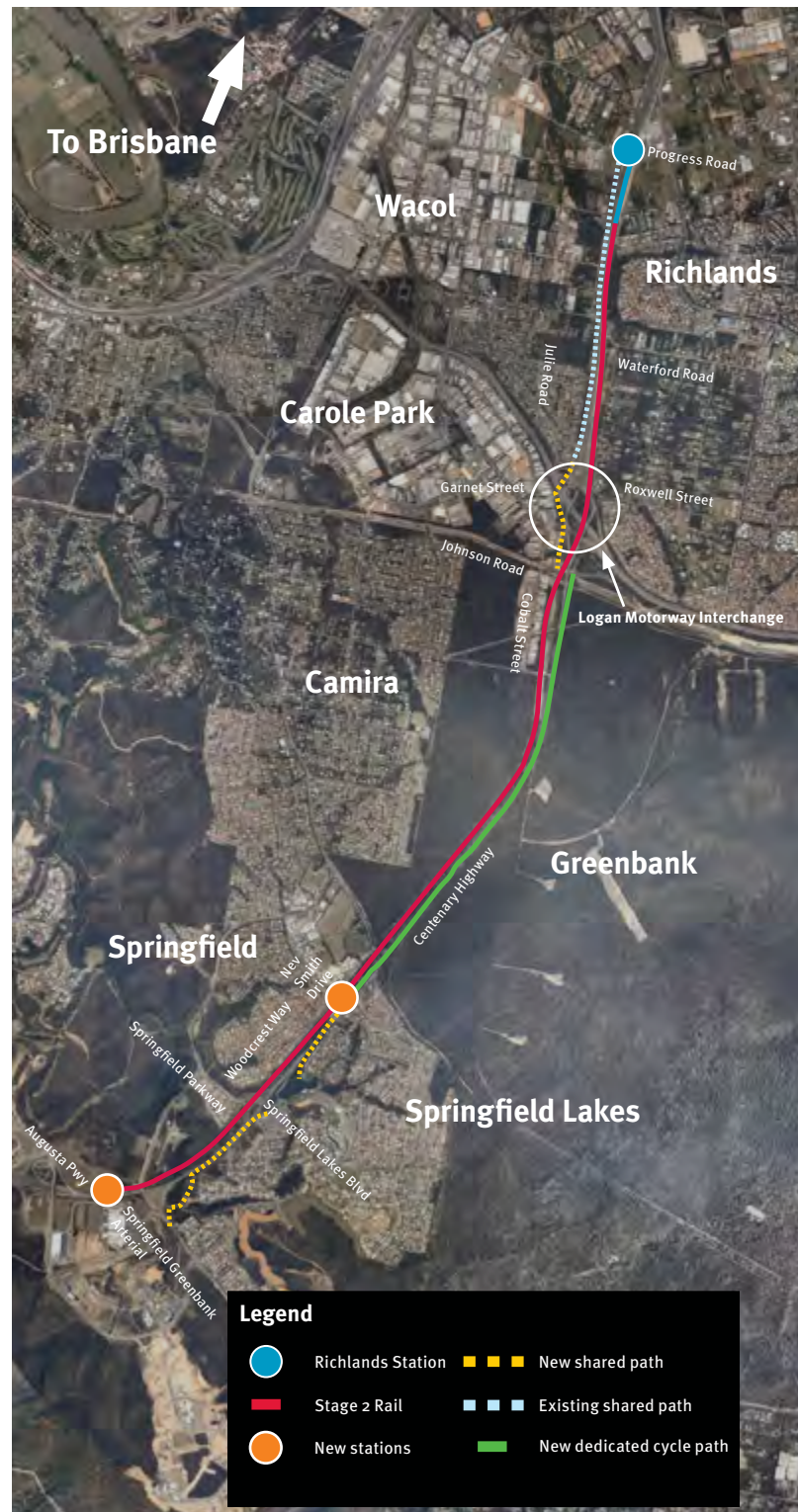
Dedicated cycle path

The 4.2 km dedicated cycle path will connect Johnson Road, Carole Park to the Springfield Link Bridge, Springfield Lakes.

Shared pedestrian and cycle paths

The 2.9 km shared path includes two sections:

- One section will connect with the cycle path from an existing path at Julie Road, Ellen Grove. It will include an elevated pedestrian and cycle bridge over the Logan Motorway to Garnet Street, Carole Park. This section will then extend along the eastern side of the Centenary Highway to Johnson Road, Carole Park.
- The second section of shared path will extend from the Springfield Link Bridge to Springfield Central Station, tying into the existing path network and giving local residents a walking or cycling alternative to using their car to access both Springfield and Springfield Central Stations.



Pedestrian and cycle path map.

About the paths

Both the dedicated cycle and shared paths will be 3.5 m wide with pavements made from a mixture of asphalt and concrete. A steel anti-throw screen will be installed along the elevated pedestrian and cycle bridge over the Logan Motorway Interchange to ensure the safety of pedestrians, cyclists and road users.

Lighting will be installed on the shared paths and the paths will also be landscaped to provide scenic amenity for pedestrians and cyclists.

End-of-trip facilities

Springfield Station will have a 50 space secure bike cage and 50 bike racks. Springfield Central Station will have a 100 space secure bike facility integrated into the station building. It will also have 20 bike racks and end-of-trip amenities including toilets, showers, change rooms and locker facilities.



A 50 space secure bike cage will be provided at Springfield Station.



External bike racks will be located at both stations.



New shared use paths will be constructed as part of the project.



The existing shared path at Julie Road, Ellen Grove.

Contact us:

Phone: 1800 067 684*
Email: info@trackstar.com.au
SMS/Email updates: Connect with the project by registering to receive SMS or email updates. Simply email or phone the project team to join.
Web: www.queenslandrail.com.au/projects
Visitor centre: Corner of Progress and Garden Roads, Richlands
Monday to Friday 8.30 am–4.30 pm

* Free call from anywhere in Australia, call charges apply for calls from mobile phones and payphones.