

COMMUNITY NOTICE

Date of Issue: 23 May 2008

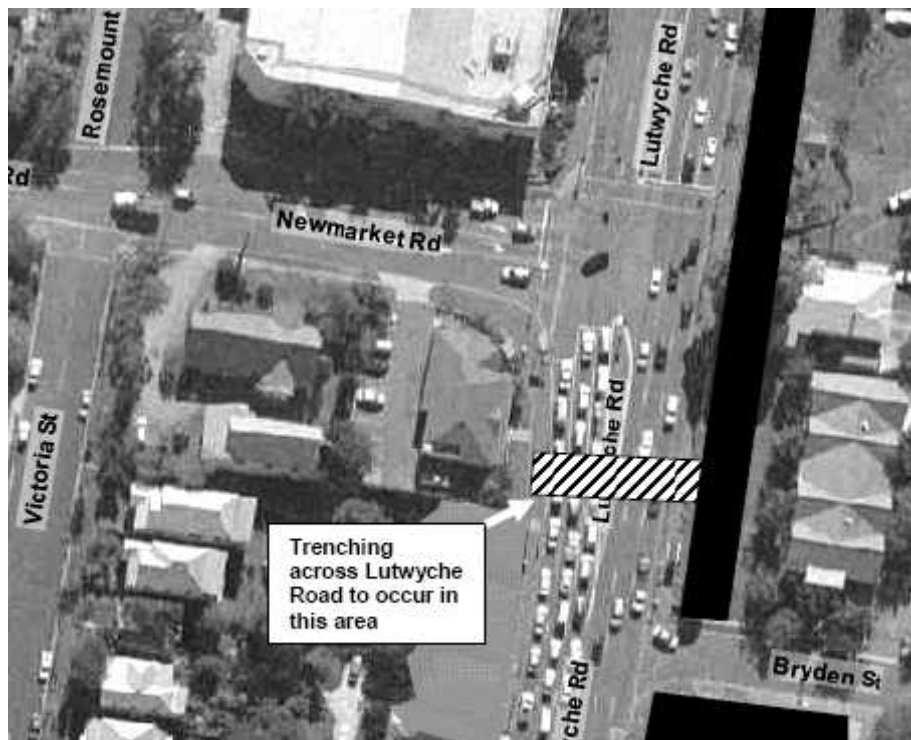
NORTH-SOUTH BYPASS TUNNEL

OUT-OF-HOURS WORK – LUTWYCHE ROAD, WINDSOR

DURATION OF WORK: Three weeks from 27 May 2008
9pm to 5am Sunday to Friday

DETAILS:

- ⇒ Nightwork will occur on Lutwyche Road near Newmarket Road to install new public utilities (services) beneath the road surface.
- ⇒ This is due to high traffic volumes during the day.
- ⇒ Work includes excavating a trench across Lutwyche Road, installation of conduits and cables, and reinstatement of the road pavement.
- ⇒ Use of heavy machinery including rockbreakers, roadsaws



WHAT TO EXPECT:

- ⇒ Noise
- ⇒ Multiple lane closures on Lutwyche Road

WHAT WE WILL DO:

- ⇒ No rockbreaking/ saw cutting after 11pm
- ⇒ Quieter activities (such as excavation and road pavement reinstatement) will be carried out between 11pm and 5am
- ⇒ Use traffic controllers

FUTURE WORK AT NIGHT (new service connections):

- ⇒ Public utilities (services such as electricity and phone lines) will be switched over from the old service to the new service between 5 June and 15 June 2008.
- ⇒ Individual services providers will provide notification to those who will be affected.
- ⇒ The service switch-overs will be carried out between midnight and 6am

For more information call us on (freecall)

1800 22 36 37

Visit the website www.rivercitymotorway.com.au

Or email contactus@nsbt.incite.com.au



LEIGHTON CONTRACTORS
AND BAILLDERSTONE HORNIBROOK
BILFINGER BERGER JOINT VENTURE

AN INITIATIVE OF



Dedicated to a better Brisbane

CONTACT US

For more information about the Project:

Call us on (freecall) **1800 22 36 37**

Visit the website **www.rivercitymotorway.com.au**

Or email **contactus@nsbf.incite.com.au**



**LEIGHTON CONTRACTORS
AND BAULDERSTONE HORNIBROOK
BILFINGER BERGER JOINT VENTURE**

AN INITIATIVE OF



Dedicated to a better Brisbane