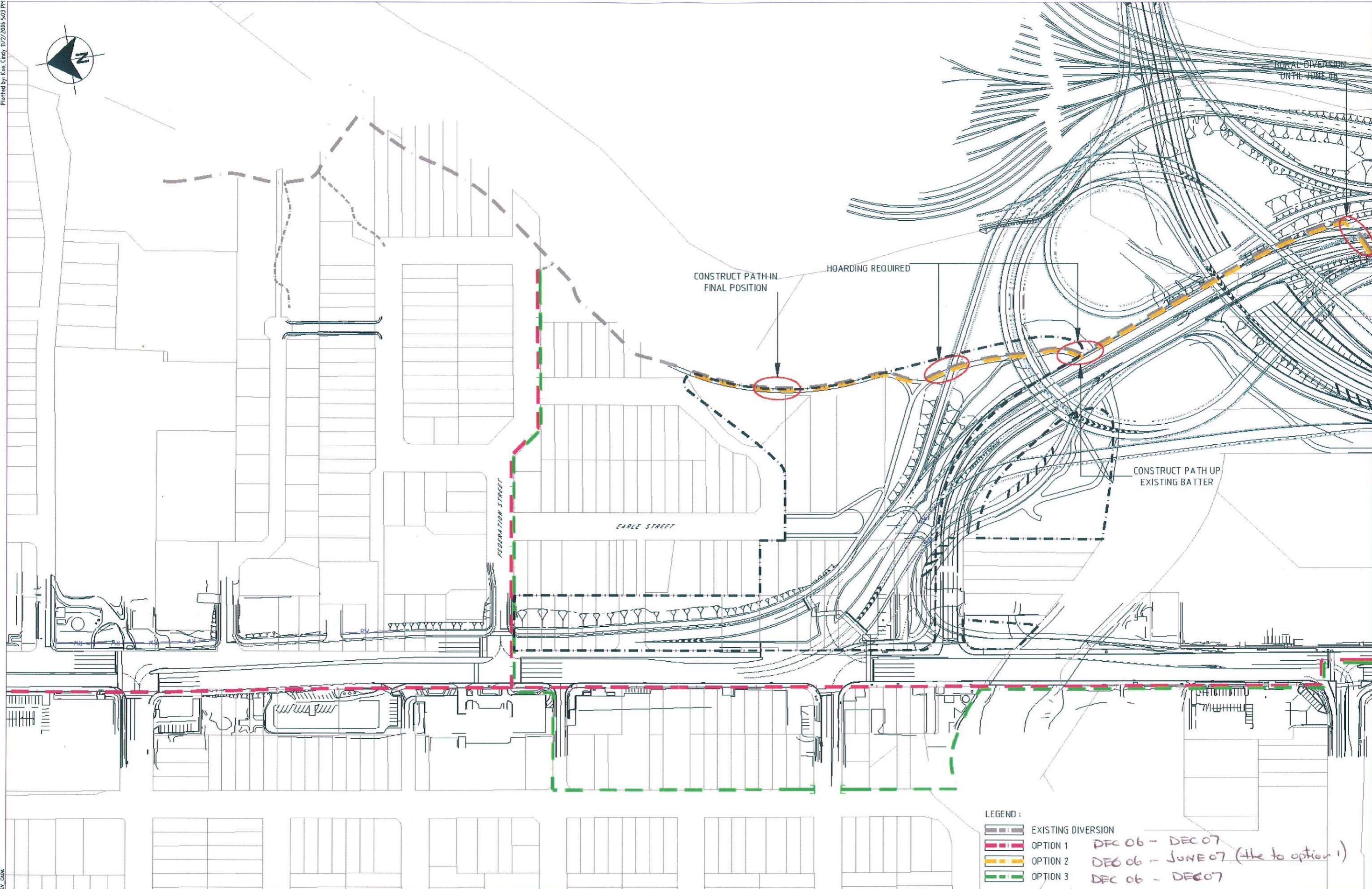


Plotted by: Kee, Cindy 11/22/2016 5:03 PM



LEGEND :

	EXISTING DIVERSION
	OPTION 1 <i>DEC 06 - DEC 07</i>
	OPTION 2 <i>DEC 06 - JUNE 07 (like to option 1)</i>
	OPTION 3 <i>DEC 06 - DEC 07</i>

Cad Ref: C:\DRAWINGS\NORTHERN STAGING NORTHERN BRIDGES\CYCLEWAY STAGING\SHEET 2 OF 16.dwg
 User: AASS Date: 13/09/06 Des: CAD.DWG, CADD

This drawing is confidential and shall only be used for the purposes of this project.

REV	DATE	DESCRIPTION	APPD

SCALE BARS

SCALE 1: 1250 (A1) 1:2500 (A3)

DESIGNED	DAB	CHECKED	
DRAWN	AASS	CHECKED	
APPROVED		DATE	



NORTH-SOUTH BYPASS TUNNEL	
ZONE 5 - SURFACE WORKS NORTH	
TMP PERIOD 2	
CYCLE ROUTE OPTIONS	
Phase	DRAFT
Dwg No.	CTMP-N-002
Rev.	00